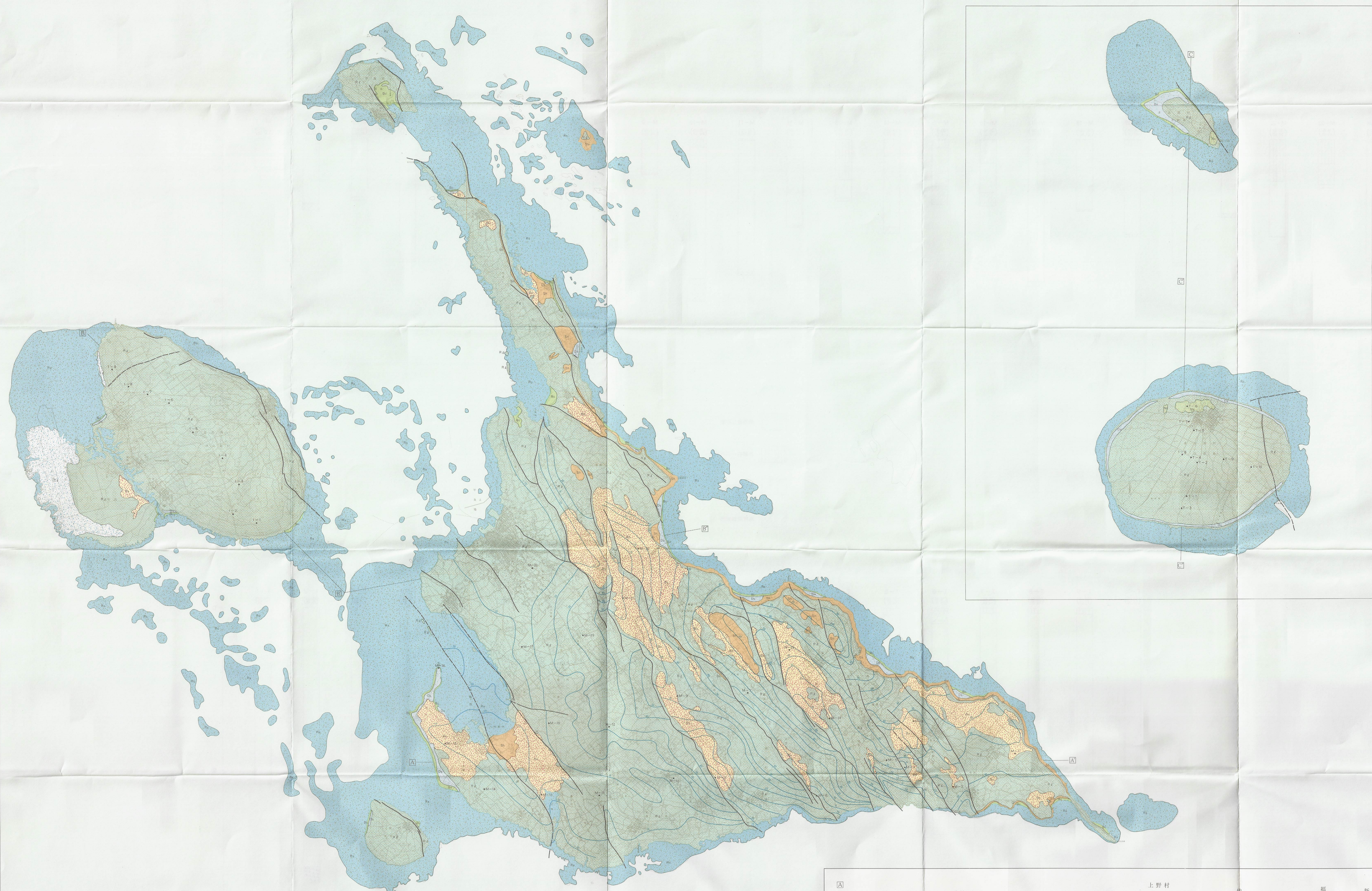


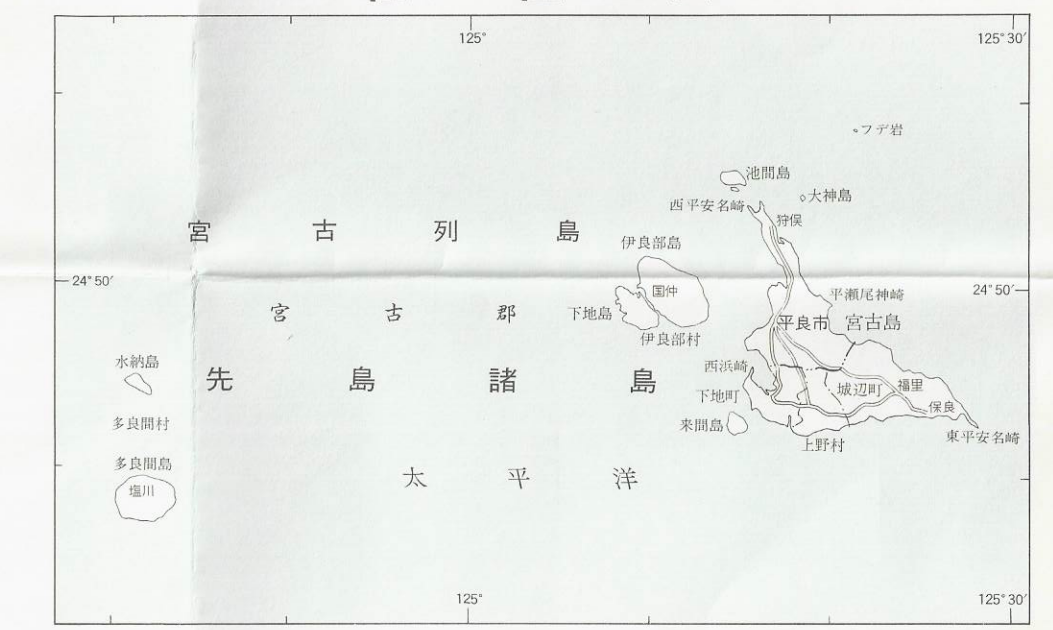
表層地質図 Subsurface Geological Map

宮古 MIYAKO DISTRICT



- 地質時代 Geology
- 第四紀 Quaternary
    - 沖積層 Holocene
      - Ds 礫石堆積物・沖積層 (未固結堆積物) 石灰質砂・礫 (Unconsolidated sediments) Calcareous sand, Gravel
      - Rs 礫石堆積物 (固結堆積物) 石灰質砂・礫 (Consolidated sediments) Calcareous sand, Gravel
      - Ms 礫石堆積物 (未固結堆積物) 石灰質砂・礫 (Unconsolidated sediments) Calcareous sand, Gravel
    - 更新世 Pleistocene
      - Ms 礫石堆積物 (未固結堆積物) 石灰質砂・礫 (Unconsolidated sediments) Calcareous sand, Gravel
      - Ns 礫石堆積物 (未固結堆積物) 石灰質砂・礫 (Unconsolidated sediments) Calcareous sand, Gravel
      - Sh 下地島石灰岩 (固結堆積物) 石灰質砂・礫 (Consolidated sediments) Akaal-hall limestone, Coral-reef limestone
      - Cl 赤褐色粘土 (未固結堆積物) 褐色粘土 (Unconsolidated sediments) Brown clay
      - Sl 琉球石灰岩 (固結堆積物) 一部に未固結堆積物 (Consolidated sediments) partly unconsolidated sediments
    - 第三紀 Tertiary
      - P 高尾層群砂岩・泥岩 (固結堆積物) 砂岩・泥岩・凝灰岩 (Consolidated sediments) Sandstone, Mudstone, Tuff
  - 地形記号
    - 地盤の高低とその差 (Bore hole points)
    - 湧水地点 (Spring)
    - 琉球石灰岩基底面等高線 (m) (Contour at base of Ryukyu Limestone, datum sea level, in meters)
    - 断層 (Fault)
    - 地質断面線 (Geological cross section)

位置図



1 : 50,000

昭和五十九年  
 月発行  
 沖繩県

調査: 国土庁  
 実施機関: 沖繩県  
 調査者: 吉川博幸 (琉球大学教員)  
 中野智明 (沖縄県教育センター)  
 祝園整枝子 (中城中学校)

Correlation: National Land Agency  
 Working Organization: Okinawa Prefecture,  
 Researchers: Hirovane FURUKAWA (General Education Division, University of the Ryukyus)  
 Koheo KAMUYA (Education Center, Okinawa Prefecture)  
 Riho SYUKUMINE (Nahaquaka Junior High School)

