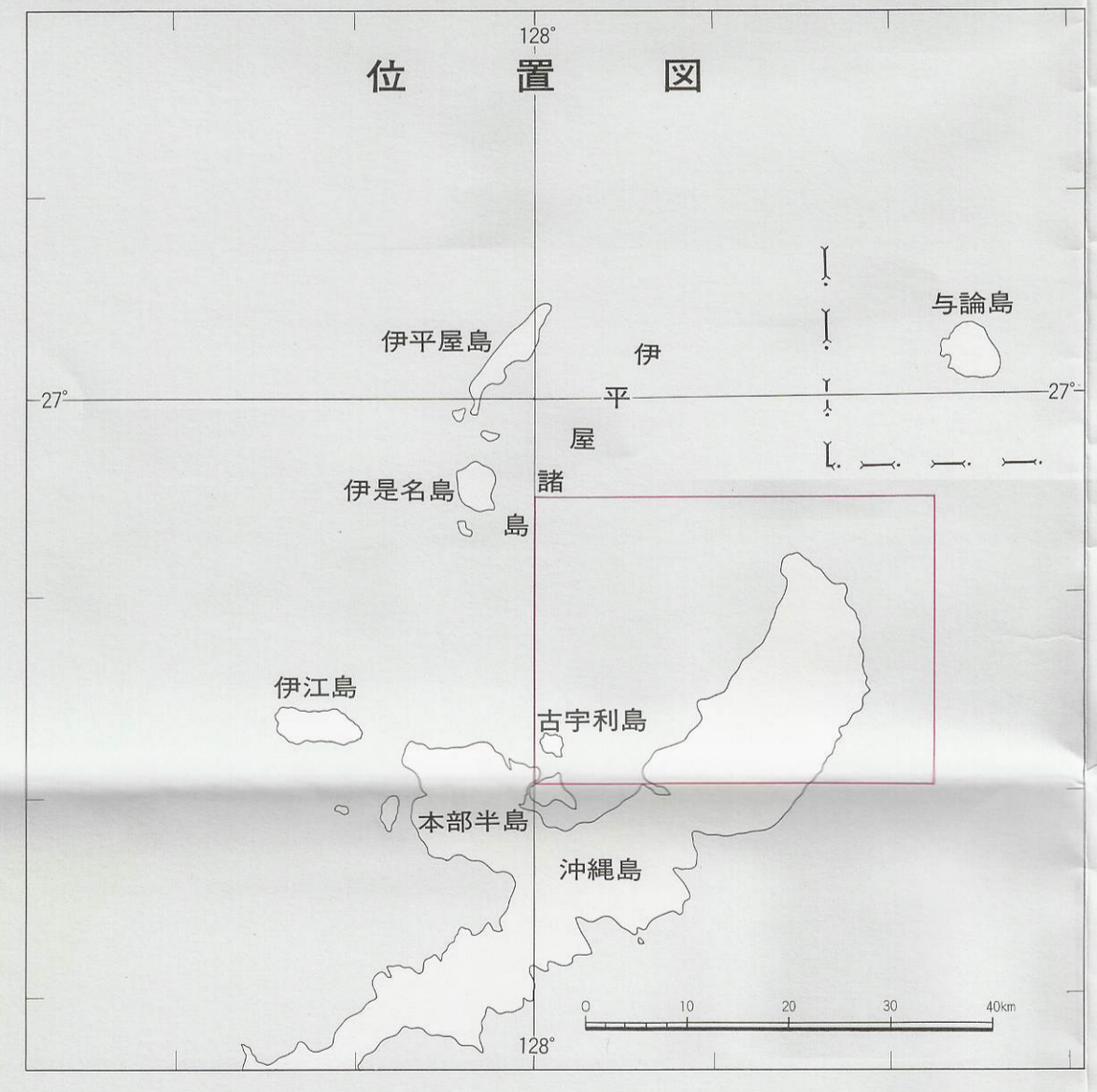
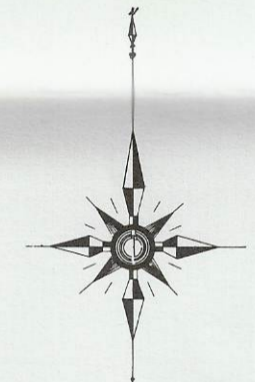
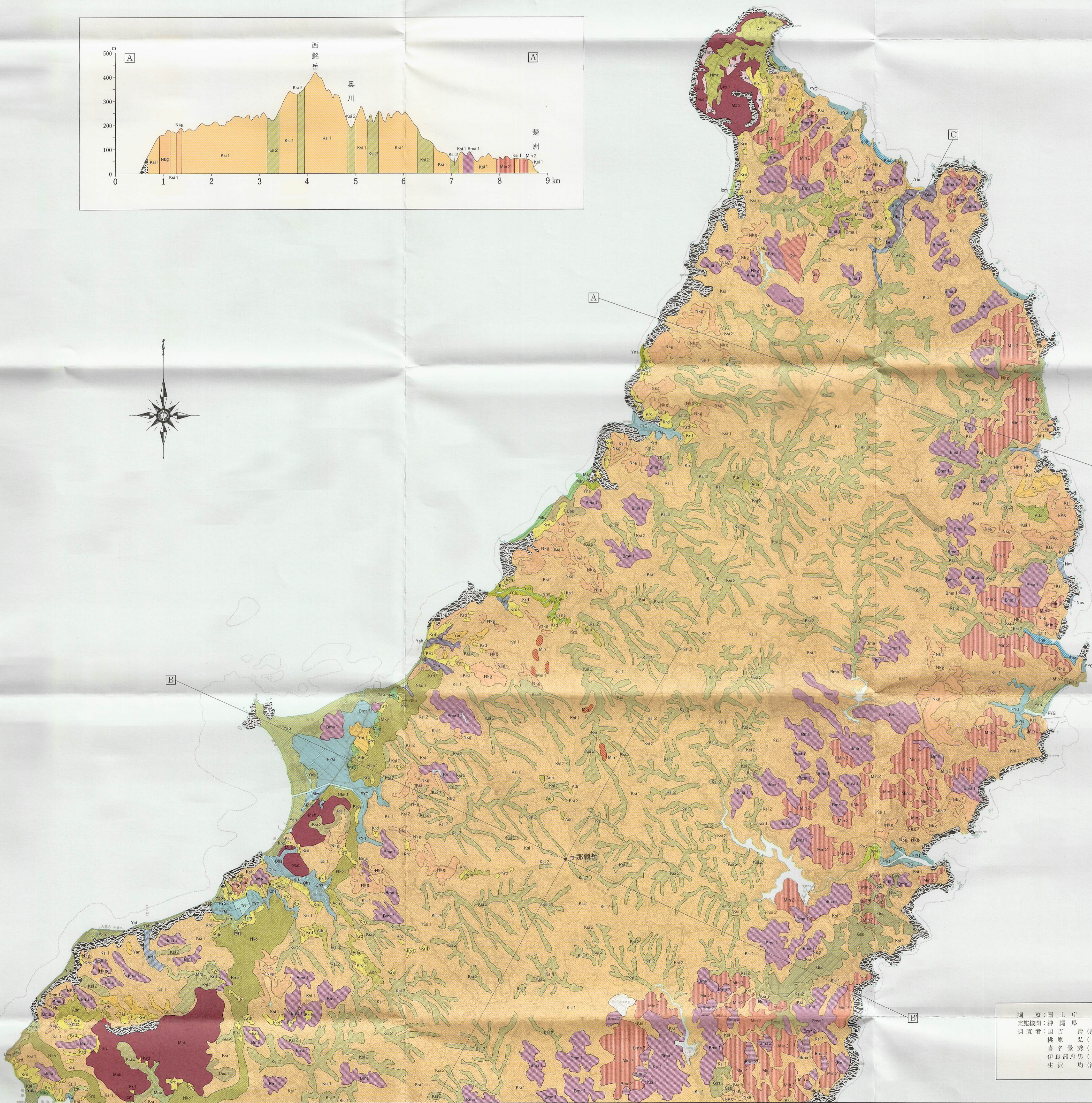
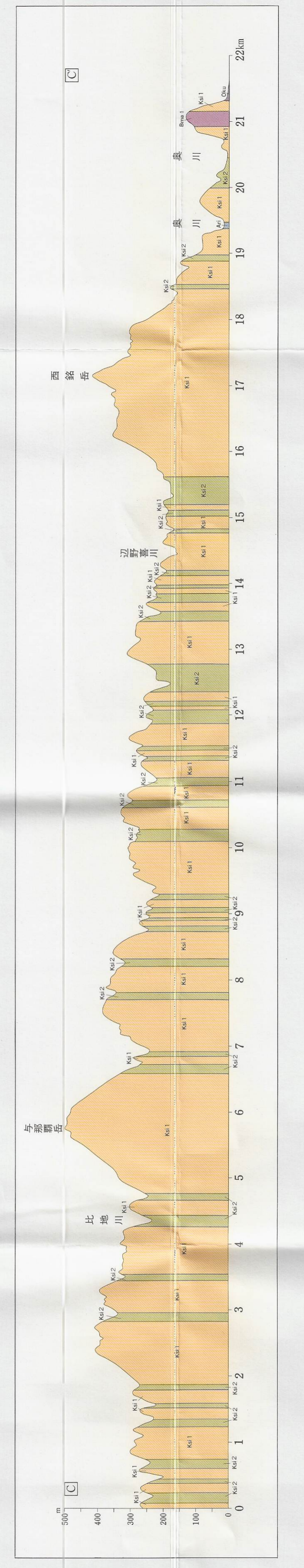
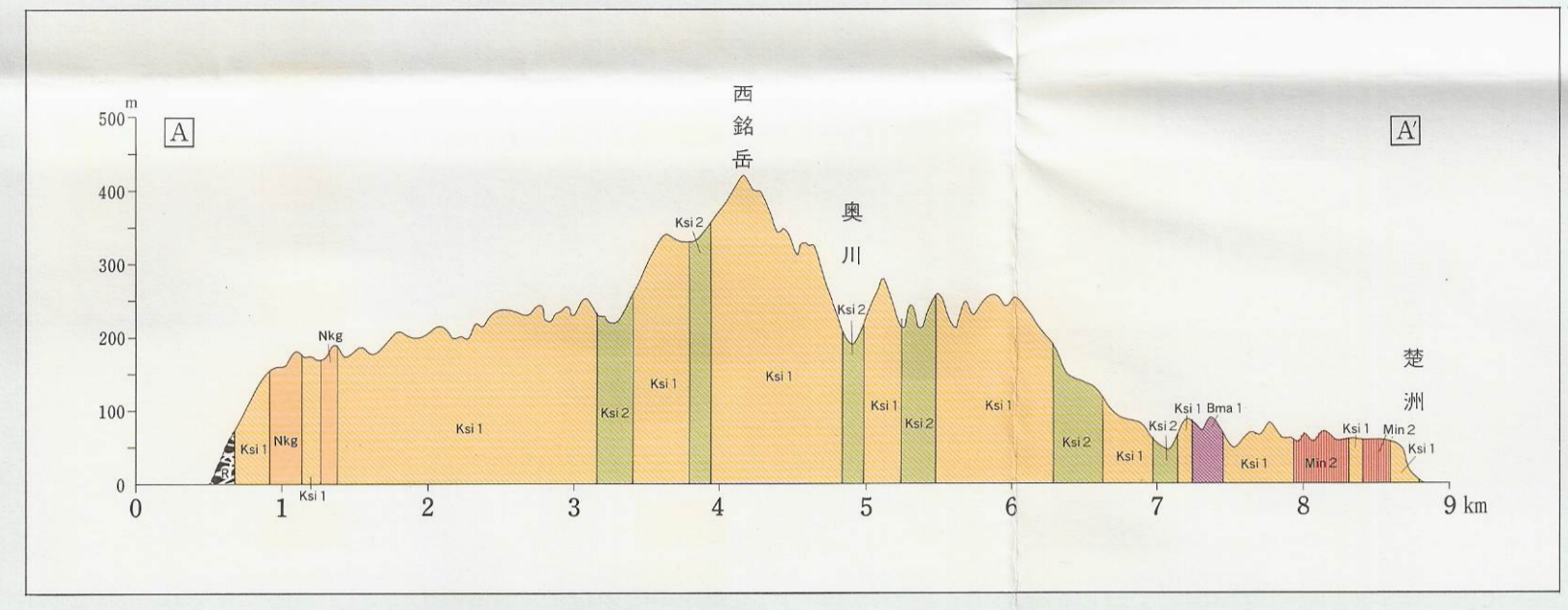
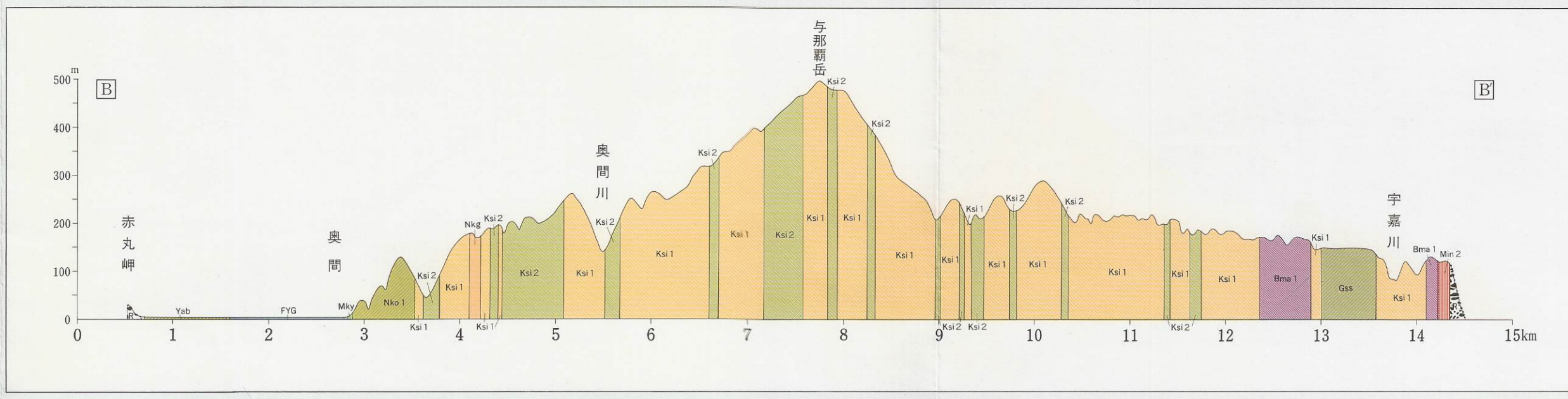


土しょう図 Soil Map

沖縄本島北部1 (奥・辺土名) Northern Part of Okinawajima (OKU-HENTONA DISTRICT)

凡例 (LEGEND)

<p>林地土壌 Forest Soils</p> <p>乾性赤色土壌 Dry red soils</p> <p>為又1統 Bima1 series 1</p> <p>適潤性赤色土壌 Moderately moist red soils</p> <p>為又2統 Bima2 series 2</p> <p>乾性黄色土壌 Dry yellow soils</p> <p>久志岳1統 Kushidake series 1</p> <p>適潤性黄色土壌 Moderately moist yellow soils</p> <p>久志岳2統 Kushidake series 2</p> <p>表層グライ系赤黄色土壌 Surface gleyed red and yellow soils</p> <p>南明治山1統 Minami meizuyama series 1</p> <p>南明治山2統 Minami meizuyama series 2</p> <p>乾性暗茶系赤色土壌 Dry eutric dark red soils</p> <p>摩文仁統 Mabuni series</p> <p>宇江城1統 Ueshiro series 1</p> <p>仲尾次1統 Nakaoji series 1</p> <p>適潤性暗茶系赤色土壌 Most eutric dark red soils</p> <p>仲尾次2統 Nakaoji series 2</p> <p>砂質赤土壌 Immature sand soils</p> <p>名城統 Nashiro series</p> <p>グライ土壌 Gley soils</p> <p>名城統 Kina series</p> <p>岩屑性土壌 Gravel soils</p> <p>岩石地 Rocky land</p>	<p>耕種土壌 Arable Soils</p> <p>細粒赤色土 Fine-textured red soils</p> <p>真志統 Gashikan series</p> <p>中川統 Nakagawa series</p> <p>中粗粒赤色土 Medium and coarse-textured yellow soils</p> <p>慶佐統 Gesashi series</p> <p>細粒黄色土 Fine-textured yellow soils</p> <p>阿陀尾統 Adambara series</p> <p>崖統 Yara series</p> <p>安田統 Ada series</p> <p>梅質黄色土 Gravelly yellow</p> <p>カラダケ統 Karakake series</p> <p>細粒暗赤色土 Fine-textured dark red soils</p> <p>並里統 Namizato series</p> <p>梅質暗赤色土 Gravelly dark red soils</p> <p>浜崎統 Hamazaki series</p> <p>仲尾次1統 Nakaoji series 1</p> <p>細粒暗茶系赤色土壌 Fine-textured brown lowland soils</p> <p>伊豆味統 Izumi series</p> <p>真喜屋統 Makaya series</p> <p>中粗粒暗茶系赤色土壌 Medium and coarse-textured brown soils</p> <p>川田統 Kawata series</p> <p>慶統 Yabu series</p> <p>梅質暗茶系赤色土壌、粗粒なし Gravelly brown lowland soils</p> <p>青統 Arime series</p>	<p>細粒暗茶系赤色土、粗粒あり Fine-textured brown lowland soils</p> <p>南無安統 Minamisan series</p> <p>梅質暗茶系赤色土、粗粒あり Gravelly brown lowland soils</p> <p>宮良底田統 Miyarasokota series</p> <p>与那統 Yona series</p> <p>細粒灰色低地土、灰色系 Fine-textured gray lowland soils, gray type</p> <p>大洗底田統 Oshima sokobara series</p> <p>梅質灰色低地土、灰色系 Gravelly gray lowland soils</p> <p>奥統 Oku series</p> <p>細粒強グライ土 Fine-textured strong gley soils</p> <p>奥統 Oku series</p> <p>中粗粒強グライ土 Medium and coarse-textured strong gley soils</p> <p>三和統 Miwara series</p> <p>造成低地土 Man-made lowland soils</p> <p>FGY 細粒黄色土、グライ土相 Fine-textured yellow soils, Gley soil phase</p>
--	---	---



調査: 国土庁
実施機関: 沖縄県
調査者: 国吉 清 (沖縄県農業試験場)
橋原 弘 ()
喜名 繁秀 ()
伊良部 忠男 ()
佐賀 均 (沖縄県林業試験場)

Correlator: National Land Agency
Working Organization: Okinawa Prefecture
Researchers: KIYOSHI KUNIYOSHI (Okinawa Prefecture Agricultural experiment station)
HIROSHI TOBARA ()
KEISHU KINA ()
TADAJO IIRABU ()
HITOSHI KUZAWA (Okinawa Prefecture Forestry experiment station)