

2023-2024

Information and Communication Industry, Industry DX Support

Information and Communication Industry Business Establishments Guide

Okinawa, the IT hub linking Asia and Japan



10-seater
Okinawan e-bus

Attractive OKINAWA - Overview

Basic information on Okinawa

Okinawa Prefecture, located in the southwest of Japan and the center of East Asia, is an island prefecture formed by 48 inhabited islands including Okinawa Island and 112 uninhabited islands. With its warm climate, beautiful sea, and rich nature, Okinawa is surrounded by an attractive environment that can only be found here in Japan.

- Total area: 2,281km²
- Total population: 1.469 Million (Jan 2024 est.)
- Population density :643.3 /km² (Oct 2020)



③Onna Village [Cape Maeda]



④Naha City [Shureimon]



①Motobu Town [Churaumi Aquarium]



②Nago City [NAGO PINEAPPLE PARK]

Industries in Okinawa

In Okinawa, 80% of the industries are in the service industry, mainly tourism, and the information and communication industry, which are the major pillars supporting the economy. In addition, the agriculture, forestry, fisheries, and manufacturing industries also produce many attractive specialty products that take advantage of Okinawa's warm climate and unique characteristics.

Living Environment in Okinawa

< Climate >

- The climate is mild all year round with little temperature difference, making it comfortable to spend time here throughout the year.
- Less cedar pollen (allergy) and comfortable in early spring compared with other cities in Japan.

< Kariyushi-wear >

In order to spend the long summer in Okinawa comfortably, the wearing of "Kariyushi-wear" has become an established practice in business scenes and at various tourist spots. The design features motifs of Okinawan culture and nature and is popular among tourists.

< Child-rearing and educational environment >

- Birth rate 1st in Japan
- A lot of large parks for children to play.
- A lot of international schools.

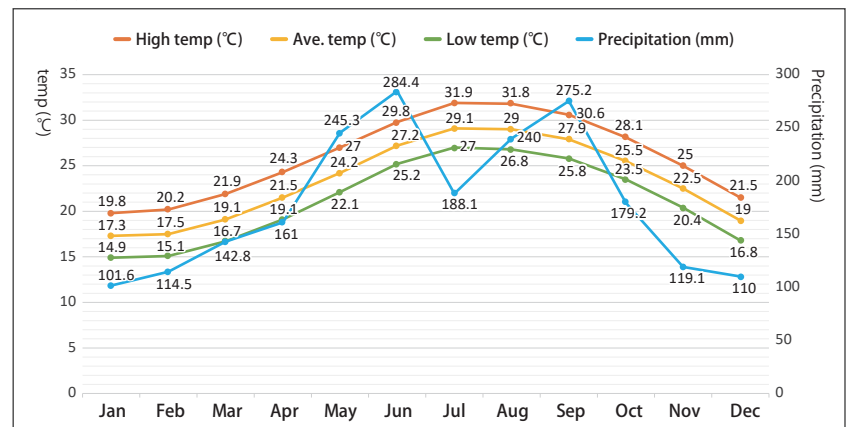


⑤Iriomote Island



⑥Miyakojima City [Iribu Bridge]

Naha City (statistical period 1991~2020): Annual average temperature 23.3 °C Annual Precipitation 2161.0 mm



Brimming With Energy, Okinawa is Japan's Youngest Prefecture

- Average age **43.5** (1st in Japan) 🏆
- Percentile of Youth Population **16.3%** (1st in Japan) 🏆 Population 1.46 million (25th in Japan)
- Population growth rate **-0.01%** (Ranks 2nd nationwide after Tokyo) 🏆



Haarii - Dragon Boat Race

■ Average age of population by prefecture

Ranking	Prefecture	Age
1	Okinawa	43.5
2	Tokyo	45.3
3	Aichi	45.6

■ Ratio of youth population by prefecture (2022)

Ranking	Prefecture	proportion (%)
1	Okinawa	16.3
2	Shiga / Saga	13.2
3	Kumamoto	13.0

■ Population growth rate by prefecture (2022)

Ranking	Prefecture	Rate of change (%)
1	Tokyo	0.2
2	Okinawa	-0.01
3	Kanagawa	-0.04

Source: Statistics Bureau, Ministry of Internal Affairs and Communications. "National Tax Survey 2020"

Source: Statistics Bureau, Ministry of Internal Affairs and Communications. "Population Estimates (As of October 1, 2022)"

Source: Statistics Bureau, Ministry of Internal Affairs and Communications. "Population Estimates (As of October 1, 2022)"



Comfortable Business Environment

As one of Japan's top resort regions visited by large number of tourists from around Japan and the world, Okinawa Boasts an Extensive Aviation Service Network and excellent access also optimal for the business scene.

Optimal Access to Asia's Major Cities

Naha Airport's domestic and international route networks are among the best in Japan. Connect with Asia's major cities in 4 hours or less with flights from Okinawa.

<As of Feb, 2024>

- Domestic flights to 29 cities
- International flights to major cities such as Beijing, Shanghai, Hong Kong, Seoul, and Singapore.



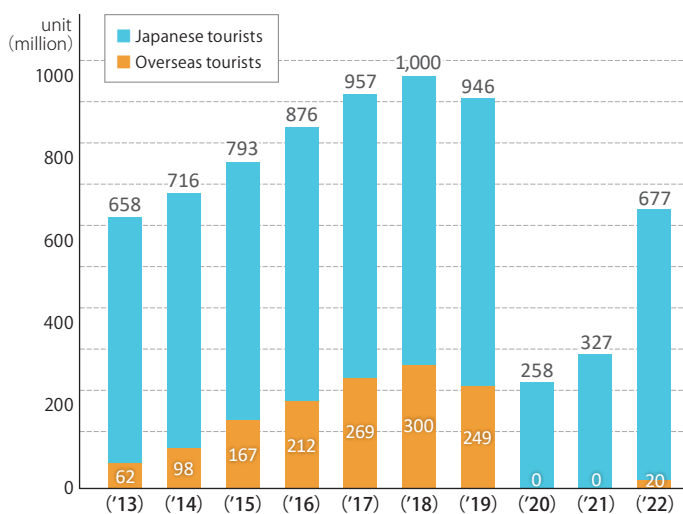
Excellent access enables you to fully enjoy your days off work

- Excellent access to major sightseeing spots within Okinawa
- Number of landings by airport (Domestic) 2nd place
Approx. 40 "Tokyo-Okinawa" flights, 25 "Kansai-Okinawa" flights, etc.
- Direct international flights to and from 7 cities around the world. ※As of Feb, 2024
Use your weekends to casually venture overseas!

Example: Number of flights and travel time between Okinawa and each major city

■ Beijing	2 flights/week	(✈ approx. 3.5h)
■ Shanghai	16 flights/week	(✈ approx. 2.0h)
■ Hongkong	21 flights/week	(✈ approx. 2.5h)
■ Taipei	60 flights/week	(✈ approx. 1.5h)
■ Seoul	35 flights/week	(✈ approx. 2.5h)
■ Singapore	3 flights/week	(✈ approx. 5.0h)
■ Tokyo	40 flights/day	(✈ approx. 2.5h)
■ Osaka	25 flights/day	(✈ approx. 2.0h)
■ Fukuoka	21 flights/day	(✈ approx. 1.5h)

Trends in the number of tourists visiting Okinawa



Ideal for Workcations

Enjoy a "Resort" work station surrounded by a rich natural environment

- Locations boasting blue skies and gorgeous beaches that spread before your eyes
- Beautiful natural surroundings currently being considered for World Heritage designation

Attractiveness Ranking by Prefecture (2022)

Ranking	Prefecture
1	Hokkaido
2	Kyoto
3	Okinawa
4	Tokyo
5	Osaka

※Source: Regional Brand Survey 2022 (Brand Research Institute, Inc)



Ginoza Village IT Operation Park Coworking Space



Kanucharian Resort Office (Kanucha Resort)

The Optimal Business Environment for Expanding into Japan

Population of China
1.4 billion

Population of Japan
130 million

Okinawa

Okinawa International Information and Communications Network

Within a Four Hour Flight from Okinawa

★ 4 Reasons to expand into Okinawa ★

1 Geographical characteristics

●Optimal access to Asia's major cities

Naha Airport's domestic and international route networks are among the best in Japan. Connect with Asia's major cities in 4 hours or less with flights from Okinawa.

●Reducing the risk of simultaneous disasters

With the reduced risk of simultaneous disasters due to the prefecture's distance from mainland Japan, Okinawa provides answers to business issues by serving as a base for dispersing development and data collection activities.

2 Substantial IT Infrastructure

●Public-private partnership cloud environment

With submarine fiber-optic cables directly connecting the Asia-Okinawa-Tokyo area and public-private cloud data centers, an environment is in place to create two-way business between Asia and Japan.

●Okinawa IT Shinryo Park and other support facilities

The Okinawa IT Shinryo Park, a strategic base for resorts and IT, a bridge between Japan and Asia, and other facilities operated by municipalities have been established in various locations.

3 Support system for your business

●Tax incentives

Special tax incentives such as the highest rate of income tax deduction in Japan (up to 40%) and investment tax credit are available.

●Software development, human resource development, and employment support

These include subsidies for development costs related to overseas business expansion into Okinawa, support for demonstration activities using IT technology, support for upgrading the skills of IT engineers, and subsidies for new hires.

4 Resort Location

Surrounded by a warm climate and abundant nature, you can enjoy both your work and private life.





Current Status of the Information and Communication Industry in Okinawa

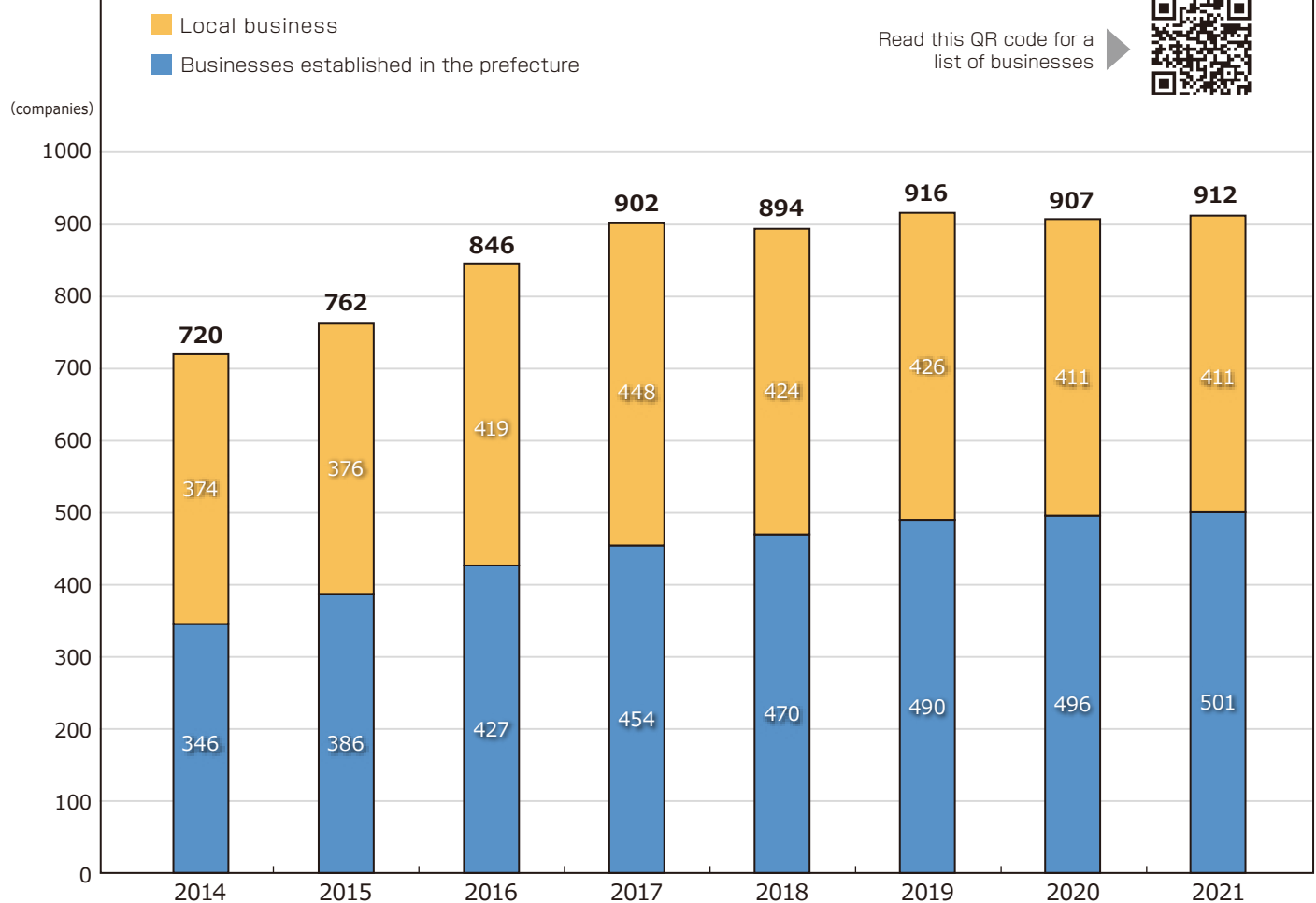
Approximately 900 companies have accumulated in Okinawa

Okinawa Prefecture has focused its efforts on promoting the Information and Communication industry as a leading industry. As a result, in FY2021, 912 Information and Communication related businesses (including 501 companies from outside the prefecture) have accumulated in Okinawa, and approximately 40,000 workers are engaged in the industry.

〈 Number of businesses and employees by industry 〉

Industry	Number of businesses	Number of employees
Information Service Business	133	8,728
Call Centers	92	16,826
Contents Creation	210	2,996
Software Development	336	9,957
Other	141	3,678
Total	912	42,185

Changes in the Number of the Information and Communication related Businesses in Okinawa



(According to the survey results conducted by Okinawa Prefecture)

Future Business Attraction

Okinawa Prefecture is focusing on attracting companies with advanced technologies such as cutting-edge digital technology and big data collection and analysis, companies that contribute to the promotion of DX in the prefecture's industries, and companies that work to resolve Okinawa's regional challenges and create innovation through advanced technologies. In addition, we will strengthen the support system for companies after they start doing their businesses and promote collaboration among companies by matching them with local companies. We will also provide detailed hands-on support to solve common challenges faced by companies and promote their growth.



Gateway to Japanese Business ResorTech EXPO in Okinawa



Only One in Asia

What is ResorTech? Originally by combining resort and technology, the term has been proposed by Okinawa Prefecture since around 2019. ResorTech EXPO aims to be the only event in Asia that combines resorts and technology. We invite you to come and visit this unique IT show (not only in Asia but worldwide)!



Resort
× Technology
ResorTech EXPO
in Okinawa



Business matching with Japanese partners



Demonstration Project on DX Testbet Island

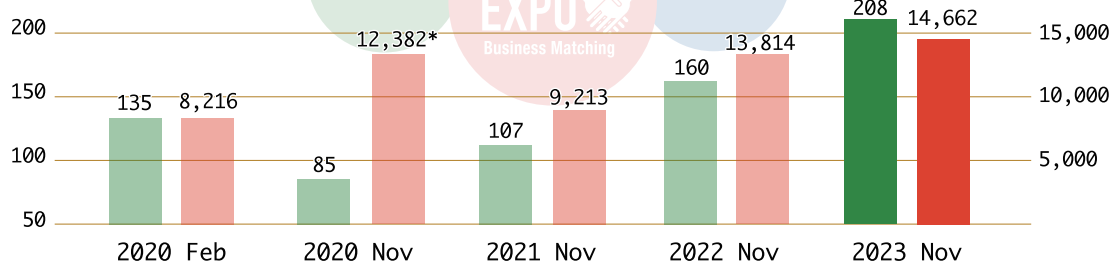


Gateway to Japan market



Support for Establishing a branch in Okinawa

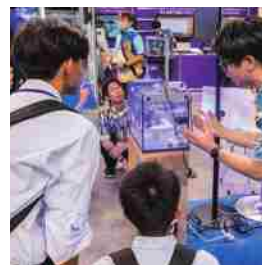
companies



*Calculated in halves for a 4-day event



ResorTech EXPO AWARD



Next is...

Name ResorTech EXPO 2024 in Okinawa
 Date November 14-15 2024
 Venue OKINAWA ARENA
 Host Executive Committee of ResorTech EXPO in Okinawa



resortech expo

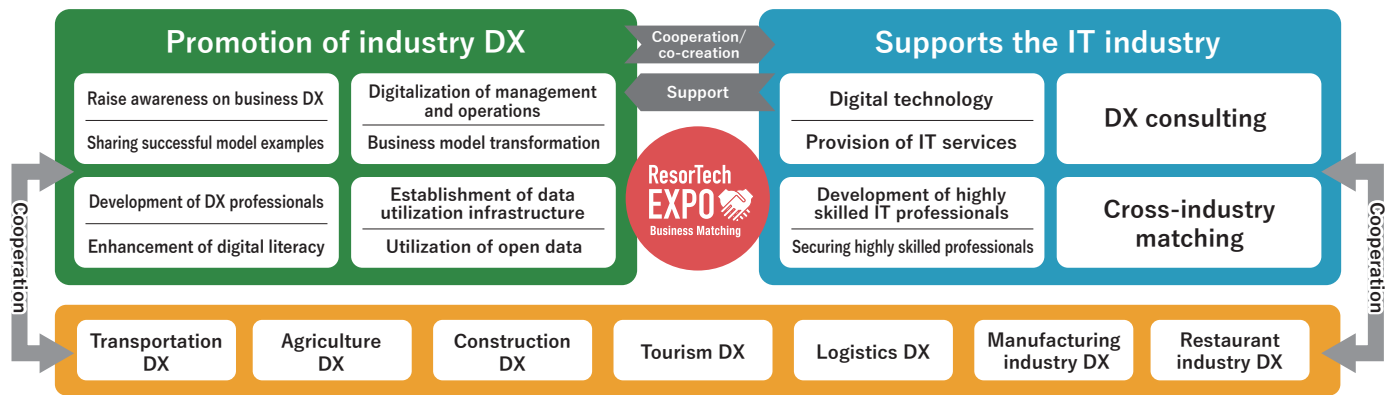


ResorTech Okinawa



ResorTech is a general term for initiatives which promote social and economic DX while working to achieve a digital society in Okinawa.

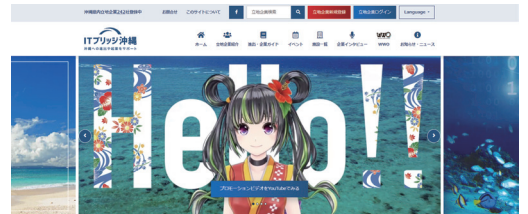
Okinawa prefecture implements various measures and policies under ResorTech Okinawa.



Related Web Sites

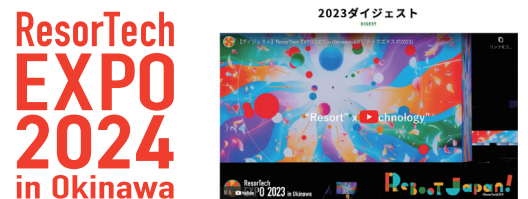
ITブリッジ沖縄 IT Bridge Okinawa

We assist with finding collaborative partners and providing event information and information for those considering doing their business in Okinawa. We will also post useful information for businesses that have started doing business in Okinawa and local businesses.



ResorTech EXPO in Okinawa

ResorTech EXPO official site. You can instantly get the latest event information and you can also find past archives.



ResorTech Okinawa

We support businesses in the prefecture by providing easy access to DX-related information and by providing information on introduction to IT, DX cases, various events, and support information for businesses in the prefecture through our website.



Industlink

Industlink is a matching service that connects each industry with IT businesses in the prefecture, assists companies by introducing IT tools by searching and comparing IT solutions to help solve their challenges.

